

15 February 2021

At the conclusion of the Corporate, Finance, Properties
and Tenders Committee

Environment Committee

Agenda

- 1. Disclosures of Interest**
- 2. Project Scope - Peace Park Upgrade, Chippendale**

Disclaimer, Terms and Guidelines for Speakers at Council Committees

As part of our democratic process, the City invites members of the community to speak directly to Councillors during Committee meetings about items on the agenda.

Webcast

In accordance with the *City of Sydney Code of Meeting Practice*, Committee meetings are recorded and webcast live on the City of Sydney website at www.cityofsydney.nsw.gov.au.

Members of the public attending a council or committee meeting may have their image, voice and personal information (including name and address) recorded, publicly broadcast and archived for up to 12 months.

Consent

By attending a council or committee meeting, members of the public consent to this use of their image, voice and personal information.

Disclaimer

Statements made by individuals at a council or committee meeting, and which may be contained in a live stream or recording of the meeting are those of the individuals making them, and not of the City. To be clear, unless set out in a resolution of council, the City does not endorse or support such statements.

The City does not accept any liability for statements made or actions taken by individuals during a Council or Committee meeting that may be contrary to law, including discriminatory, defamatory or offensive comments. Such statements or actions are not protected by privilege and may be the subject of legal proceedings and potential liability, for which the City takes no responsibility.

Guidelines

To enable the Committee to hear a wide range of views and concerns within the limited time available, we encourage people interested in speaking at Committee to:

1. Register to speak by calling Secretariat on 9265 9310 or emailing secretariat@cityofsydney.nsw.gov.au before 10.00am on the day of the meeting.
2. Check the recommendation in the Committee report before speaking, as it may address your concerns so that you just need to indicate your support for the recommendation.
3. Note that there is a three minute time limit for each speaker (with a warning bell at two minutes) and prepare your presentation to cover your major points within that time.
4. Avoid repeating what previous speakers have said and focus on issues and information that the Committee may not already know.
5. If there is a large number of people interested in the same item as you, try to nominate three representatives to speak on your behalf and to indicate how many people they are representing.

Committee meetings can continue until very late, particularly when there is a long agenda and a large number of speakers. This impacts on speakers who have to wait until very late, as well as City staff and Councillors who are required to remain focused and alert until very late. At the start of each Committee meeting, the Committee Chair may reorder agenda items so that those items with speakers can be dealt with first.

Committee reports are available at www.cityofsydney.nsw.gov.au

Item 1.

Disclosures of Interest

Pursuant to the provisions of the City of Sydney Code of Meeting Practice and the City of Sydney Code of Conduct, Councillors are required to disclose pecuniary interests in any matter on the agenda for this meeting.

Councillors are also required to disclose any non-pecuniary interests in any matter on the agenda for this meeting.

This will include receipt of reportable political donations over the previous four years.

In both cases, the nature of the interest must be disclosed.

Item 2.

Project Scope - Peace Park Upgrade, Chippendale

File No: X025378

Summary

This report outlines the proposed scope of works for the upgrade of Peace Park, Chippendale. Peace Park has been identified for renewal as part of the small parks and playgrounds improvement program.

The project brief is to refurbish the whole park, replace end of life play equipment and soft-fall, provide a range of play experiences for children of different ages and abilities, improve accessibility and circulation into and through the park, improve turf durability and quality, as well as provide additional seating and associated landscape improvements.

Draft Concept Plans were presented to the community between 20 July and 24 August 2020 and were exhibited on the City's website. Community feedback was associated with four broad themes: turf type, shared pathway alignment, planting and play equipment. Community feedback was incorporated into a Revised Concept Plan. These include a review of the proposed turf type, shared path alignment, retaining all existing trees and increasing playground equipment.

The Revised Concept Plans were presented to the community between 27 November and 18 December 2020 and exhibited on the City's website. The proposed works were generally supported by the community and the responses highlighted that the park is highly utilised by a wide variety of users and is a key piece of open space for residents.

The key principles of the proposal are to upgrade the turf surface, renew the playground to provide a local scale play space which maximises play opportunities for children of different ages and abilities, improve access in and around the park, improve lighting and use simple, robust, high quality materials which reflect the local neighbourhood character.

Recommendation

It is resolved that Council:

- (A) endorse the scope of work for improvements to Peace Park as described in the subject report and shown in the revised concept design as Attachment B to the subject report, for progression to relevant approvals, preparation of construction documentation, tender and construction; and
- (B) note the estimated project forecast as outlined in Confidential Attachment D to the subject report.

Attachments

- Attachment A.** Location Plan and Site Photos
- Attachment B.** Revised Concept Plan
- Attachment C.** Engagement Report
- Attachment D.** Financial Implications (Confidential)

Background

1. The City has an ongoing small parks and playgrounds improvement program for parks in need of upgrade or enhancement works, replacement of end of life equipment, and to provide appropriate facilities for local residents.
2. Peace Park is a rectangular-shaped park located on Myrtle Street between Pine Street and Buckland Street, Chippendale. The site is approximately 1,750 square metres.
3. The land is owned by the City of Sydney.
4. Peace Park was identified for an upgrade due to the park's overall condition, including poor turf performance and growth, end of life play equipment and soft-fall surfacing, limited seating provision and poor access through and around the park.
5. A particular issue is the poor turf growth and high wear as a result of high use and limited sun in areas.
6. The City of Sydney purchased the site (70-80 Myrtle Street) in 1978, and in 1985 a section of Myrtle Street between Pine and Buckland Streets was closed and incorporated into the establishment of Peace Park. In 1995, the park was refurbished, and two community mosaics, The Birds of Peace and Industry, were installed. The most recent upgrade of the playground was to renew the soft-fall material in 2006.
7. There is a strong and active community in the Chippendale area. The park is highly utilised and well-loved by a variety of community members for play, rest, relaxation and particularly dog exercise.
8. The park is characterised as a small pocket park, with a paved, pedestrianised area to the south. To the north is an open grassed area and a partially fenced neighbourhood playground catering for children of all ages. A grove of Paperbark trees shades the northern edge. Planting beds edge the park, separating it from the surrounding streets, streetscape footpaths and the Broadway cycle link, which runs along Myrtle Street and across the park's south boundary.
9. The existing play equipment includes a play structure with curly slide, staircase and spiral climb as well as a shop front and steering wheel play panels. There is also a swing set with two seats, toddler and child. Seating within the play-space is limited.
10. The existing planting includes:
 - (a) a mix of exotic and native shrub and groundcovers;
 - (b) 32 trees in total with the majority being native species, and
 - (c) 21 of the trees are *Melaleuca quinquenervia* (Broad Lead Paperbark), the dominant species within the park.
11. An Indigenous Cultural Consultant has been engaged as part of this upgrade process, to ensure the project contributes to recognising the City's Indigenous heritage, celebrating Aboriginal and Torres Strait Islander cultures in the public domain, and enriching local knowledge about the cultural landscape.

12. Consideration has been given to the provision of play equipment in surrounding parks within a 500 metre radius, to ensure a coordinated network of facilities that caters for a broad range of park users.

Revised Concept Design

13. A Draft Concept Design was developed for the works and community consultation undertaken.
14. Following consultation, feedback from the community has been incorporated into the Revised Concept Design (refer to Attachment B).
15. The Revised Concept Design sets the overall layout. The key principles are:
 - (a) retain the existing shared path alignment;
 - (b) protect and enhance the existing landscape character, including existing trees;
 - (c) renew the playground to provide a local scale play space which maximises play opportunities for children 0-11+;
 - (d) relocate the play area to the north (shaded) area of the park and consolidate the turfed area in the sunnier central area of the park;
 - (e) increase seating and provide a range of seating opportunities to enhance social interaction; and
 - (f) use simple, robust, high quality materials which reflect the local neighbourhood character.
16. The proposal includes the following works:
 - (a) a hybrid turf area located in the park's sunniest area for optimal turf growth. Hybrid turf is a combination of open weave synthetic turf oversown with natural turf. This helps provide a much stronger wearing surface;
 - (b) speed reduction and alignment measures (chicanes, bollards and fences) to slow bike movement and encourage use of the shared path;
 - (c) review existing site drainage, stormwater retention, soil profiles and irrigation to optimise water efficiency and sustainability in the park. Incorporate sustainable water practices including absorption grates adjacent to paths, and direction stormwater to planted areas;
 - (d) a new play structure with a curly slide and staircase components as well as imaginative play panels/elements;
 - (e) a new three seat swing set with one toddler seat and two strap seats for all ages;
 - (f) new soft-fall across the play area. Soft-fall is to be minimised and colours muted;
 - (g) new permeable paving to Buckland Street footpath around the existing street trees;

- (h) increased seating in both sun and shade;
 - (i) new bins and bubbler with dog bowl;
 - (j) retain Birds of Peace and Industry mosaics in their existing location;
 - (k) new seating wall allocated for future community artwork; and
 - (l) an area allocated for a future community garden/compost.
17. In response to community feedback, the following will be investigated in the detailed design as noted in Attachment C:
- (a) review proposed play equipment provision to maximise play experiences where possible;
 - (b) review provision of a picnic table noting concerns also raised about people congregating at night;
 - (c) improve site drainage, particularly in the turfed area to reduce boggy areas (poorly drained); and
 - (d) a lighting design will be prepared as part of the detailed design and will reflect City of Sydney Lights Code requirements for park lighting.
18. The Indigenous Cultural Consultant has produced a 'Narratives' report, which broadly identifies project opportunities for the integration of Indigenous themes and narratives. The key themes and narratives which were raised include:
- (a) Peace Park was part of an important catchment area; Blackwattle Swamp and Creek was once a tidal watercourse that extended from Glebe to Redfern. This park was known as 'Pino Park' Pine Street.
 - (b) Peace Park is also on a significant Aboriginal Pathway Site - Brickfields - one of many Aboriginal pathways (muru) in the Sydney area and went south directly to Botany Bay. This site would have been used mainly for its resources of birdlife, and perhaps even the harvesting of weapons like wommeras and boomerangs made from the tough angled mangroves.
19. The engagement process highlighted that stakeholders were interested in seeing the demonstration of culture in the design of the parks. This was predominantly expressed though a desire to see Aboriginal themed inclusions in the design such as artwork, language, and native plants.
20. As part of the next stage of the upgrade, the consultant and project team will review how the key themes and narratives should be implemented into the project design and delivery.
21. The following tree management and planting is proposed as part of the park works:
- (a) retain and protect existing trees;
 - (b) preparation of an Aboricultural Impact Assessment and Tree Protection Plan to inform the detailed design and ensure appropriate construction methodology near existing trees and when installing equipment and soft-fall; and

- (c) provide additional and supplementary planting as required to provide habitat as well as sensory and edible opportunities.
22. A Review of Environmental Factors (REF), and any other required approvals, will be prepared and assessed for the park upgrade in accordance with the Environmental Planning Assessment Act 1979.

Key Implications

Strategic Alignment - Sustainable Sydney 2030

23. Sustainable Sydney 2030 is a vision for the sustainable development of the City to 2030 and beyond. It includes 10 strategic directions to guide the future of the City, as well as 10 targets against which to measure progress. This report is aligned with the following strategic directions and objectives:
- (a) Direction 6 - Vibrant Local Communities and Economies - this project will provide an improved open space infrastructure which meets the needs of a wide variety of user groups and provides opportunities for social interaction.
 - (b) Direction 9 - Sustainable Development, Renewal and Design - this project is part of a wider program of renewal of small parks across the city; it will provide an improved quality of open space infrastructure.

Organisational Impact

24. This upgrade will provide improved amenity for the community visiting the park.
25. Upgrading the playground will provide improved play experience and amenity for children and their carers. The replacement of the non-compliant play assets represents a removal/mitigation of risk to the City. The assets will require ongoing maintenance.
26. Upgrading the turf will provide improved surface conditions, coverage and reduce the amount of time the turf area is closed (4-6 months each year) to the public due to resting, returfing and establishment. The asset will require ongoing maintenance.

Risks

27. Risks of not implementing the scope of these works include potential failure of play infrastructure and risk to the community. Daily inspections are carried out by the City as per standard parks and playground maintenance operations.
28. Risks of not implementing this scope of works could result in failure to meet community expectations.

Social / Cultural / Community

29. The site is an important open space within the Chippendale area where people do not have access to backyards or courtyards within their own homes. The site provides a place for people to meet, walk their dogs, eat their lunch or drink a take-away coffee from the adjacent café. The park is located 20 metres from the SDN Chippendale Child Care Centre and Pine Street Creative Arts Centre and is 260 metres from the Blackfriars Children's Centre.
30. Improving the amenity and play offering within the park represents an investment in this community, providing opportunities for people of different ages and abilities to use the park alongside each other.

Environmental

31. Protection and enhancement of the existing planting through this works is in line with the Urban Ecology Strategic Action Plan.

Financial Implications

32. There are sufficient funds in the Parks Renewal Capital Works 10 year budget to complete all currently programmed small park upgrades to be delivered by 2024. Current project cost estimates and financial implications for the delivery of the Peace Park upgrade are detailed in Confidential Attachment D. Construction cost estimates will be confirmed by a Quantity Surveyor prior to tender.

Relevant Legislation

33. Local Government Act 1993 -Section 10A provides that a Council may close to the public so much of its meeting as comprises information that would, if disclosed, confer a commercial advantage on a person with whom the Council is conducting (or proposes to conduct) business.
34. Attachment D to the subject report contains confidential commercial information which if disclosed, would confer a commercial advantage on a person with whom Council is conducting (or proposes to conduct) business.
35. Discussion of the matter in an open meeting would, on balance, be contrary to the public interest because it would compromise Council's ability to negotiate fairly and commercially to achieve the best outcome for its ratepayers.
36. Environmental Planning and Assessment Act 1979.
37. State Environmental Planning Policy Infrastructure 2007.
38. Sydney Local Environmental Plan 2012.
39. Disability Discrimination Act 1992.
40. Companion Animals Act 1998.

Critical Dates / Time Frames

41. Current Program Dates:

- Council Approval of Concept Design February 2021
- Detailed Design March 2021
- Tender Late 2021
- Construction Start Early 2022
- Construction duration 24 weeks

Options

42. Option 1 (recommended): Proceed with progression of improvement works as outlined in this subject report including relevant approvals, preparation of construction documentation, tender and construction.
43. Option 2: The project does not proceed. This option is not recommended as the playground has a number of compliance issues and associated risks. A recent playground condition assessment (2020 Playground Audit) together with the City's broader park condition assessments and inspections identified the parks playground fencing, gate, play unit, swing and safety surface materials as needing replacement to meet relevant Australian Standards.

Public Consultation

44. Public Consultation was undertaken as a two-part process: pre-consultation/early engagement and public consultation/exhibition. For a detailed description of the consultation process and findings refer to Attachment C.
45. A pre-consultation notification letter/email was issued to a number of local stakeholders and 147 local residents to notify them of the project, provide a link to a pre-consultation survey and offer to meet on site to discuss the proposed upgrade.
46. A pre-consultation meeting was held on-site with two residents and there were three consultation meetings with staff at the Chippendale Child Care, the Pine Street Creative Arts Centre and the Blackfriars Child Care Centre, to provide feedback for the draft concept design.
47. There were 58 submissions during the pre-consultation period. Key themes were;
- (a) Improve turf surface
 - (b) Improve play offering and fully fencing the play area
 - (c) Improve shared pathway
 - (d) Increase seating

48. The public consultation/exhibition of the Draft Concept Design involved the following:
 - (a) A letter sent to 969 residents about the concept design inviting them to provide feedback
 - (b) A stakeholder email sent to local stakeholders, inviting them to give feedback on the proposal. The email was sent to:
 - (i) Pine Street Creative Arts Centre
 - (ii) SDN Chippendale Children's Education and Care Centre
 - (iii) Blackfriars Child Care Centre
 - (c) A webpage on SydneyYourSay showing the plans for the consultation from 20 July to 24 August 2020. 168 individual users viewed the page.
 - (d) Two Have Your Say A2 panels were installed in the park notifying the park users of the proposed works, providing contact details of the Design Manager and a web address to the SydneyYourSay page; and
 - (e) An online briefing was scheduled for 4 August 2020. Nine people attended.
49. There were 64 submissions received during the Draft Concept Design consultation feedback. This included submissions via email and the online feedback form.
50. There were six main areas of comment including turf type, tree replacement, shared path alignment, play equipment, mosaic relocation and sustainable initiatives.
51. Due to feedback from the community, a resident workshop group was assembled to review the concept plan and consultation comments. The group met twice; on 29 October 2020 at the Pine Street Creative Arts Centre and on 17 November 2020 via Zoom.
52. A Revised Concept Design was prepared with the resident workshop group, considering all community feedback.
53. The public consultation/exhibition of the Revised Concept Design involved the following:
 - (a) A letter sent to 969 residents about the concept design inviting them to provide feedback
 - (b) A stakeholder email sent to local stakeholders, inviting them to give feedback on the proposal. The email was sent to:
 - (i) Pine Street Creative Arts Centre
 - (ii) SDN Chippendale Children's Education and Care Centre
 - (iii) Blackfriars Child Care Centre
 - (c) A webpage on SydneyYourSay showing the plans for the consultation from 27 November to 18 December 2020. 320 individual users viewed the page.

- (d) Two Have Your Say A2 panels were installed in the park notifying the park users of the proposed works, providing contact details of the Design Manager and a web address to the SydneyYourSay page; and
 - (e) One onsite meeting with a resident.
54. There were 18 submissions received during the Revised Concept Design consultation feedback. This included submissions via email and the online feedback form.
55. The revised design and proposed works were predominately supported by the community and the responses highlighted that the park is highly utilised and well loved by a variety of community members for play, rest, relaxation and dog exercise.
56. Key feedback included:
- (a) support for upgrading the playground with two of the submissions requesting specific additional play equipment/elements;
 - (b) two submission raised concern about mosquitos in the park and requested rubber instead of bark soft-fall;
 - (c) two submissions requested picnic tables;
 - (d) one submission requested fitness equipment; and
 - (e) one submission requested a fenced area for dogs.
57. In response to community feedback, the following will be investigated in detailed design as noted on Attachment C;
- (a) review proposed play equipment provision to maximise play experiences;
 - (b) review provision of a picnic table noting concerns also raised about people congregating at night;
 - (c) improve site drainage, particularly in the turfed area, to reduce boggy areas (poorly drained); and
 - (d) a lighting design will be prepared as part of the detailed design and will reflect City of Sydney Lights Code requirements for park lighting.
58. As part of the next stage of the upgrade, the Indigenous Cultural Consultant will work with the project team to identify how the key themes and narratives identified from the consultation should be implemented into the project design and delivery.

AMIT CHANAN

Director City Projects and Property

Lucy Farley, Design Manager

Attachment A

Location Plan and Site Photos



Image 1 - Photo of southern portion of Peace Park. View from Buckland street to Pine street with shared pathway on the left



Image 2 - Photo from the north of Peace Park looking south across the turf area



Image 3 - Photo from the playground looking towards Buckland street across the turf area



Image 4 - Photo of Peace Park playground with play structure, swing set, seats and water bubbler



Attachment B

Revised Concept Plan

Proposed works



Location Plan

- Brick paving (new and existing)
- New permeable path
- Retain existing paving
- New turf areas
- New and retained planting
- New rubber soffitall
- New mulch soffitall
- New stairs
- Retained mosaics
- Bench seats
- Bin
- Bollards
- Bubbler
- New park fence
- New playground fence
- Outline of existing turf area
- New play structure with slide
- New swing set (x3 seats)
- Retain and protect existing trees

In response to community feedback, the following will be incorporated/investigated in detailed design as noted in Attachment C;

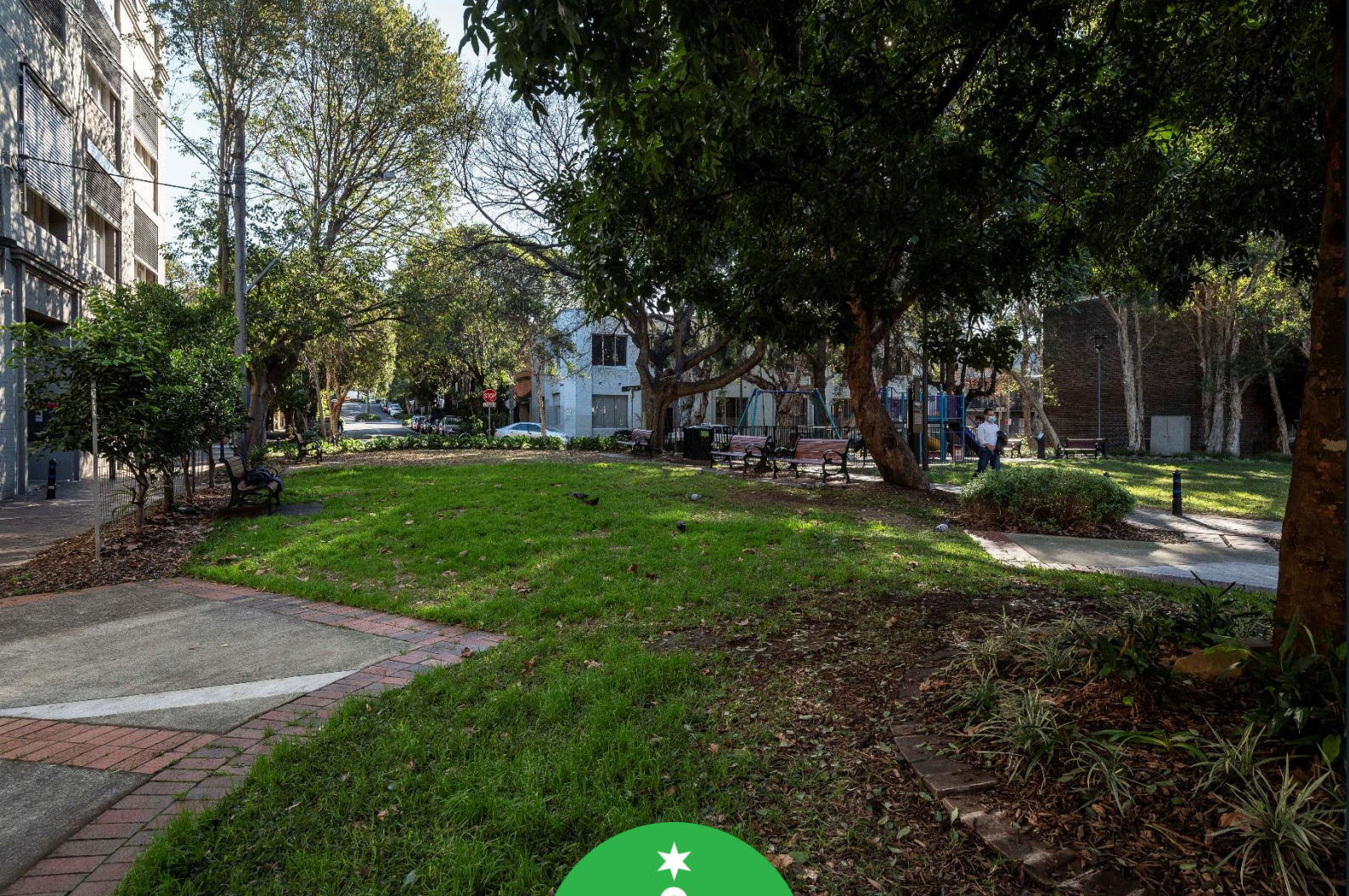
- (a) review proposed play equipment provision to maximise play experiences where possible;
- (b) review provision for a table noting concerns also raised about people congregating at night;
- (c) improve site drainage, particularly in the turf area to reduce boggy areas (poorly drained);
- (d) a lighting design will be prepared as part of the detailed design and will reflect City of Sydney Lights Code requirements for park lighting.

- 01** Permeable surface treatment to footpath
- 02** New legible and welcoming pedestrian entries
- 03** Improved circulation and access paths
- 04** New seating wall. Opportunity for future community artwork
- 05** New fenced play area including play structure with play panels and a curly slide, swing set with three seats and nature play elements, suitable for children aged 1-10 years
- 06** Retain existing and provide new planting
- 07** New water bubbler with dog bowl
- 08** Increased seating, both new and refurbished, in sun and shade locations
- 09** New central hybrid turf area (reinforced)
- 10** Lighting upgrade as required
- 11** Chicanes and bollards to discourage cyclists accessing this area
- 12** Retain Birds of Peace & Industry mosaic in existing location
- 13** Edible garden. Opportunity for future community garden and compost bin
- 14** Retain area and improve turf
- 15** Retain existing gravel seating area
- 16** Retain existing shared path in current location
- 17** Investigate raised threshold crossings

Peace Park upgrade - revised community consultation plan

Attachment C

Engagement Report



Engagement report

Peace Park, Chippendale

January 2021



Contents

Background	3
Engagement summary	3
Key findings	5
Engagement activities	18
Appendix	19

Background

Over the next 10 years, we're upgrading more than 60 parks across the City of Sydney area, from small pocket parks to larger local parks.

Quality green open spaces are a high priority for our residents, workers and visitors. This network of park upgrades will create better quality open spaces for everyone to enjoy, help keep our city cooler, and support biodiversity in our local areas.

Prior to finalising the designs, we are consulting the community and stakeholders on these proposed park improvements. In 2020, we consulted on our stage 15 parks, which include:

- Minogue Crescent, Forest Lodge
- **Peace Park, Chippendale**
- Tote Park, Zetland
- Woolloomooloo Playground, Woolloomooloo
- Park on Lyons Road, Camperdown

Engagement summary

From 27 November to 18 December 2020, we asked the community for feedback on a revised concept plan to improve Peace Park, Chippendale.

The revised concept plan reflects community feedback received when we exhibited a concept design from 20 July to 24 August 2020. Key themes raised in the feedback included a review of the proposed turf type, shared path alignment, retaining all existing trees and increasing playground equipment.

Consultation activities included online engagement, a letter to residents, project signage at the park and two community design group meetings.

This report outlines the community engagement activities that took place to support the consultation and summarises the key findings from the consultation.

Purpose of the engagement

The purpose of the engagement was to:

- gather feedback from stakeholders and the community about the proposed upgrade
 - determine the level of satisfaction with the revised concept design.
-

Outcomes from the engagement

Submissions received during July/August 2020 consultation

We received a total of 64 submissions (via Survey Monkey, email and phone) during the public exhibition period. The Sydney Your Say page was visited 168 times during the consultation period.

Submissions received during Nov/Dec 2020 consultation

We received a total of 18 submissions during the consultation period. This included submissions via an online feedback form and the Sydney Your Say email address.

The Sydney Your Say page was visited 320 times during the consultation period.

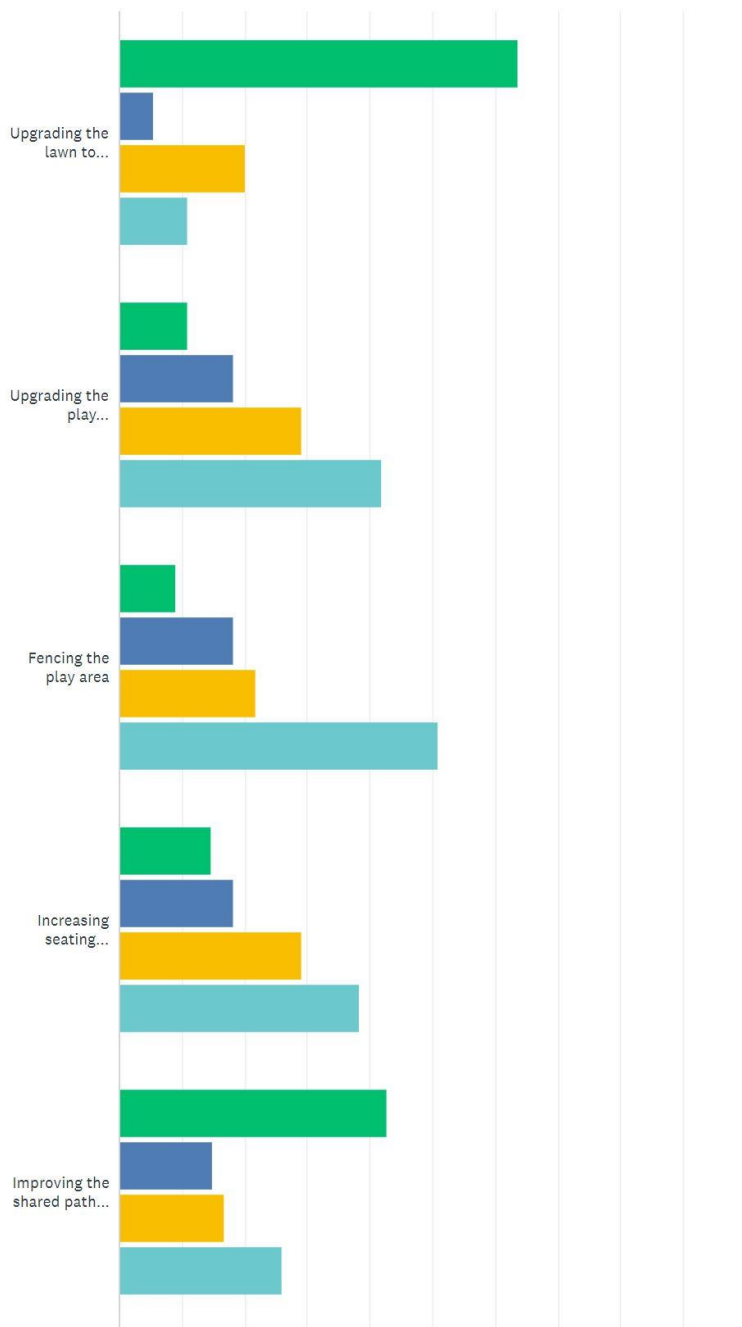
Key findings

Overview of key findings from July/August 2020 consultation

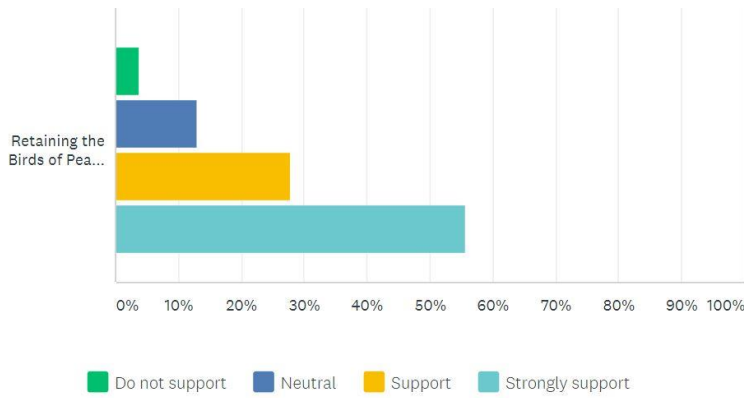
Respondents who completed the online feedback form were asked to rate how important elements of the proposed design were to them. The results are below

Do you support the following elements of the upgrade?

Answered: 55 Skipped: 0



Engagement report



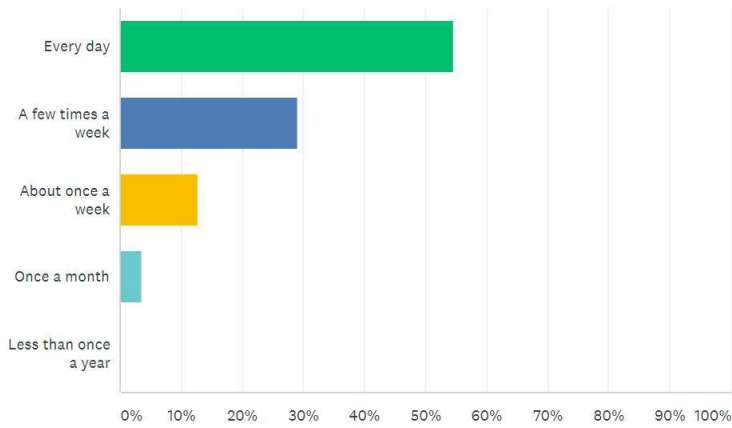
	DO NOT SUPPORT	NEUTRAL	SUPPORT	STRONGLY SUPPORT	TOTAL
▼ Upgrading the lawn to synthetic turf	63.64% 35	5.45% 3	20.00% 11	10.91% 6	55
▼ Upgrading the play area/equipment	10.91% 6	18.18% 10	29.09% 16	41.82% 23	55
▼ Fencing the play area	9.09% 5	18.18% 10	21.82% 12	50.91% 28	55
▼ Increasing seating opportunities	14.55% 8	18.18% 10	29.09% 16	38.18% 21	55
▼ Improving the shared path (cyclists and pedestrians)	42.59% 23	14.81% 8	16.67% 9	25.93% 14	54
▼ Retaining the Birds of Peace & Industry mosaic within the park	3.70% 2	12.96% 7	27.78% 15	55.56% 30	54

Comments (0)

Engagement report

How often do you currently use the park?

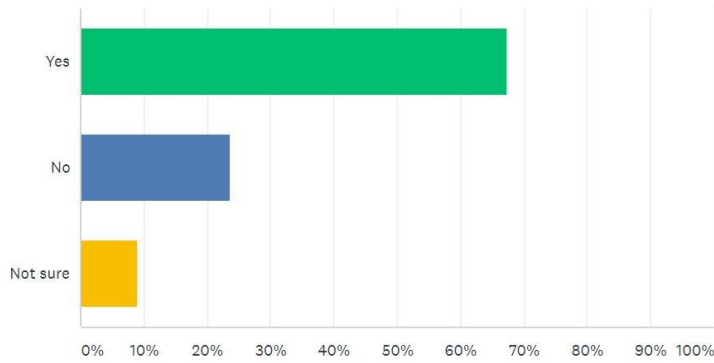
Answered: 55 Skipped: 0



ANSWER CHOICES	RESPONSES
▼ Every day	54.55% 30
▼ A few times a week	29.09% 16
▼ About once a week	12.73% 7
▼ Once a month	3.64% 2
▼ Less than once a year	0.00% 0
TOTAL	55

Do you think that the upgrade would change your use of the park?

Answered: 55 Skipped: 0



ANSWER CHOICES	RESPONSES
▼ Yes	67.27% 37
▼ No	23.64% 13
▼ Not sure	9.09% 5
TOTAL	55

Many respondents highlighted the importance of retaining as much natural turf as possible in the park and not using synthetic turf. There was also strong opposition to realigning the current shared path.

There was strong support for the upgrade to the existing play equipment and the opportunity to create more seating in the park.

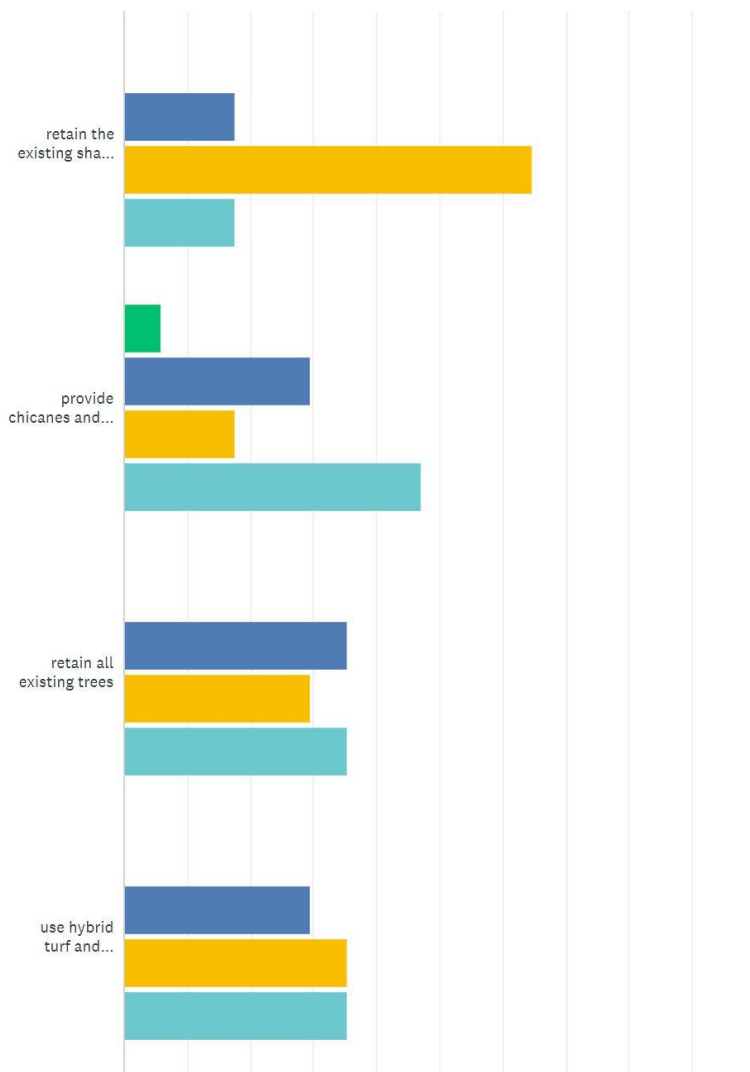
Overview of key findings from Nov/Dec 2020 consultation

The majority of the community feedback supported the amendments made to the draft concept plan. Generally, respondents indicated that the revised concept plan better reflected the unique character of the park and balanced the need for play provision with more passive recreation activities.

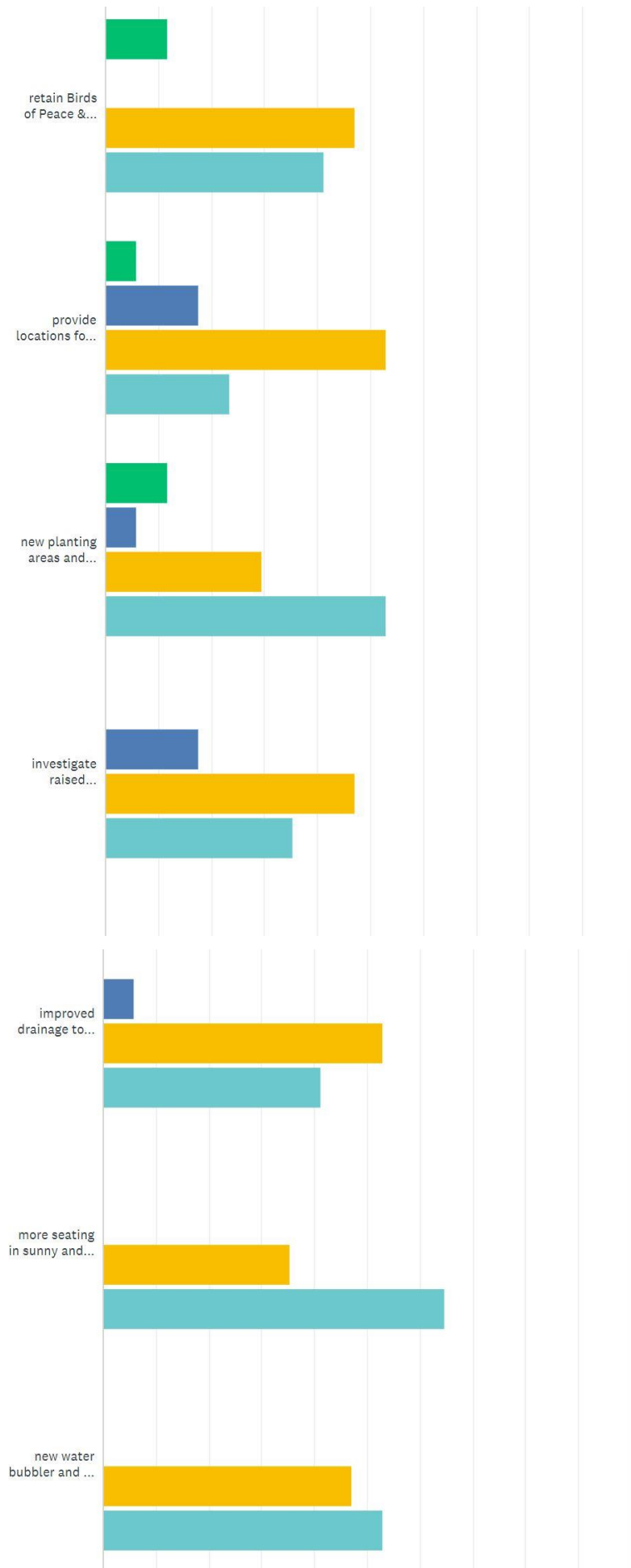
Respondents who completed the online feedback form were asked to rate how important elements of the proposed design were to them. The results are below:

Do you support the following elements of the upgrade?

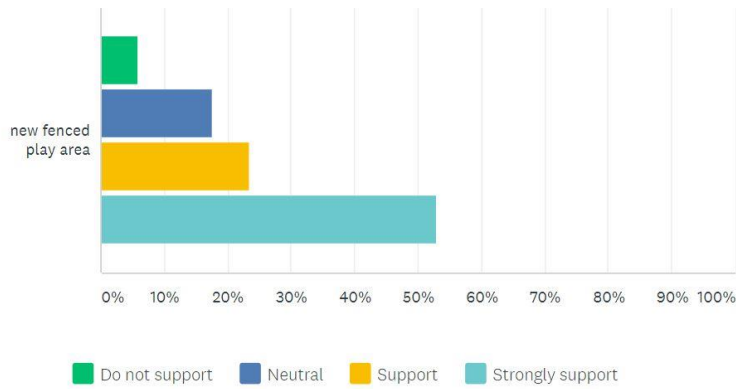
Answered: 17 Skipped: 0



Engagement report



Engagement report



	DO NOT SUPPORT	NEUTRAL	SUPPORT	STRONGLY SUPPORT	TOTAL
retain the existing shared path location/alignment	0.00% 0	17.65% 3	64.71% 11	17.65% 3	17
provide chicanes and bollards to slow cyclists	5.88% 1	29.41% 5	17.65% 3	47.06% 8	17
retain all existing trees	0.00% 0	35.29% 6	29.41% 5	35.29% 6	17
use hybrid turf and consolodate lawn in the sunniest area to aid growth	0.00% 0	29.41% 5	35.29% 6	35.29% 6	17
retain Birds of Peace & Industry mosaics in the existing location	11.76% 2	0.00% 0	47.06% 8	41.18% 7	17
provide locations for future community artwork/mosaics	5.88% 1	17.65% 3	52.94% 9	23.53% 4	17
new planting areas and future opportunity for community garden and composting bin	11.76% 2	5.88% 1	29.41% 5	52.94% 9	17
investigate raised thresholds on Buckland Street and Pine Street	0.00% 0	17.65% 3	47.06% 8	35.29% 6	17
improved drainage to capture rainwater and retain water on site	0.00% 0	5.88% 1	52.94% 9	41.18% 7	17
more seating in sunny and shady locations	0.00% 0	0.00% 0	35.29% 6	64.71% 11	17
new water bubbler and dog bowl	0.00% 0	0.00% 0	47.06% 8	52.94% 9	17
new fenced play area	5.88% 1	17.65% 3	23.53% 4	52.94% 9	17

Subjects/topics raised in submissions

Several subjects/topics were raised in the feedback received. These were presented as concerns, suggestions and/or requests and are summarised below.

General		
Project Scope	Total	City of Sydney Response
<p>Supportive comments about the new design:</p> <ul style="list-style-type: none"> “I think the new arrangement addresses the need for multiple equipment to be shared amongst the regular crowd.” “It’s hard to imagine what hybrid turf will be like, but it sounds like the council is trying to keep turf natural while making it durable. Well done if so” “I like the swings and the play equipment itself definitely needs an upgrade, so I support that. I think those and some of these smart changes would improve the use of the park”. 	3	Noted.
Layout	Total	City of Sydney Response
Requests for additional chicanes/bollards at the south/west corner adjacent to the café.	1	Design team to review in next phase of design. Measures to slow bikes will be incorporated in the design.
Planting	Total	City of Sydney Response
Support for hybrid turf	1	Included in the proposed upgrade.
<p>Concerns with natural turf;</p> <ul style="list-style-type: none"> What is the problem with the grass. 	1	<p>Peace Park is a highly utilised pocket park. The turf struggles to thrive due to high use demands and shaded conditions. The turf gets less than 4 hours of sun per day.</p> <p>The City undertakes regular turf maintenance including; mowing, edging, decompaction, fertilisation and resting.</p> <p>The City has trialled different turf species (including shade tolerant species) and undertaken soil preparation to improve subsoil conditions.</p>

Engagement report

Playground	Total	City of Sydney Response
Requests to increase the playground area.	2	<p>As part of the park upgrade the City will be installing a central hybrid turf area to improve turf coverage and durability.</p> <p>Not currently being investigated for this site.</p> <p>The new layout and proposed work aims to provide improved amenity to support the range of existing uses and users.</p> <p>Peace Park is a well utilised and loved pocket park by a wide variety of users. The park provides a place for children to play, people to meet, exercise, walk their dogs, eat their lunch or drink a take-away coffee from the adjacent café.</p>
Requests to retain current playground footprint/reduce size of playground area.	2	<p>Noted. The new layout and proposed work aims to provide improved amenity to support the range of existing uses and users.</p>
Support for equipment to cater for all ages and abilities.	1	<p>The City provides a variety of playspaces and play equipment for the recreational and developmental needs of children of all ages and abilities. Where possible, the City will provide a diverse, inclusive and accessible range of playspaces across the City's park networks.</p> <p>The playground upgrade will be designed to be inclusive and maximise play experience.</p> <p>In pre-consultation we heard that the curly slide was a well loved equipment piece that should be retained.</p> <p>As part of the first round of community consultation we heard that more equipment pieces including swings was preferred.</p> <p>Consideration has been given to the provision of play equipment in surrounding parks within a 500m radius, to ensure a coordinated network of facilities that caters for a broad range of park users.</p>
Request to consider site's shaded damp environment and issues with mosquito.	2	<p>Design team to investigate and incorporate in next phase of design.</p>

Engagement report

Requests for water and music play elements as well as pedal powered equipment.	3	<p>Not currently being investigated for this site.</p> <p>Water play and pedal powered equipment are generally proposed where a high level of maintenance can be achieved at 'destination' parks.</p> <p>Musical play equipment is not proposed as part of this park upgrade due to proximity to residential units.</p>
Requests for more play equipment for younger children.	1	<p>The playground upgrade aims to provide an opportunity for multiple children of all ages and range of abilities to play together.</p> <p>Consideration has been given to the provision of play equipment in surrounding parks within a 500m radius, to ensure a coordinated network of facilities that caters for a broad range of park users.</p> <p>Alternate play areas with play equipment suitable for younger age groups can be found at Strickland Park and Victoria Park.</p>
Request to increase play equipment - more swings, slides and climbing elements.	3	The selection and layout of equipment is currently being reviewed. We will provide additional play equipment where possible and maximise play experiences.
Park Amenities	Total	City of Sydney Response
Requests for picnic table and seating.	2	<p>A range of seating opportunities will be provided as part of the upgrade. These will include seats in sun and shade as well as seating with back rests and arm rests and platform benches.</p> <p>No picnic tables are proposed as part of the upgrade due to proximity to residences. Picnic tables and BBQs are provided at Victoria Park.</p>
Opposition to retaining the Birds of Peace and Industry mosaics in its current location.	2	<p>Not currently being investigated for this site.</p> <p>In the draft concept we proposed to relocate the mosaics to an alternate location to provide more area for turf in the sunniest location. During public consultation we heard that retaining the</p>

Engagement report

		mosaics in their current location was important to the community.
Requests for exercise equipment.	1	<p>Not currently being investigated for this site.</p> <p>Peace Park is a well utilised and loved pocket park by a wide variety of users. The revised concept design responds to the pre-consultation and consultation feedback.</p> <p>The proposed works to the park aim to provide improved amenity within the park to support the range of existing uses.</p>
Requests for a water sculpture/feature connecting water from adjacent private properties	1	<p>Not currently being investigated for this site.</p> <p>This site is not nominated as part of the Public Art Strategy and therefore not being considered as part of the scope of works.</p>
Requests for a bird bath	1	Design team to review in next phase of design.
Requests for a fenced dog area.	1	<p>Not currently being investigated for this site.</p> <p>The existing fencing to Pine street will be retained and new fencing installed to Buckland street. New planting and chicanes will also provide a sense of enclosure to the turf area from the adjacent streets.</p> <p>Dogs are welcome at many different parks in the City of Sydney. We clearly signpost off-leash, on-leash and prohibited areas (playgrounds) and provide dog litter bag dispensers. For more information, please visit https://www.cityofsydney.nsw.gov.au/dog-parks-in-sydney</p>
Request for two bins.	1	<p>A City of Sydney bin will be provided as part of the upgrade.</p> <p>There is currently one bin in Peace Park and it is serviced everyday, including weekends. We have reviewed park enquiries and service levels with our Waste Team and the bin is usually half full with rubbish not being pushed down properly.</p>

Engagement report

Other	Total	City of Sydney Response
Requests for regular park maintenance.	1	<p>The City will continue to monitor bin levels and enquiries, and when required install additional bins.</p> <p>The Park's maintenance team inspects the playground and empty rubbish bins daily. Turf is regularly mowed and maintained and trees are inspected annually.</p> <p>We have forwarded your feedback to our Park's Maintenance Team.</p> <p>To report future park maintenance issues, don't hesitate to contact our Customer Service desk on 02 9265 9333 or you can report an issue online such as trees on City property requiring maintenance or any other issues that impact your community at: https://online.cityofsydney.nsw.gov.au/ReportIssue</p>
Request/support for WSUD design features such as agricultural drainage pipes.	2	<p>As part of all park upgrades, how water is managed on site is important. WSUD opportunities will be investigated and incorporated in the next phase of the design.</p>
Request to modify existing rainwater gardens in Buckland Street	1	<p>Not currently being investigated as part of park upgrade scope of works.</p> <p>We have forwarded your feedback to the City's Infrastructure, Traffic and Operations Team. The City is currently reviewing our raingardens including those referenced in Buckland Street. An enquiry has been raised and will be addressed in the near future.</p> <p>The City of Sydney is committed to maintaining a clean and safe community. If you observe City property requiring maintenance, trip hazards or any other issues that impact your community please report it at: https://online.cityofsydney.nsw.gov.au/ReportIssue</p>
Request to provide raised thresholds at Pine Street and Buckland Street	1	<p>Not currently being investigated as part of park upgrade scope of works.</p> <p>We have forwarded your feedback to the</p>

Engagement report

		City's Infrastructure, Traffic and Operations Team.
Requests to provide annual reporting on park infrastructure and feedback.	1	<p>Not currently being investigated as part of park upgrade scope of works.</p> <p>Requests for maintenance and asset records can be lodged through our website at: Request City Records (https://www.cityofsydney.nsw.gov.au/library-information-services/request-city-records). This process is required to be followed so staff can ensure all information is provided in accordance with the overnment Information (Public Access) Act 2009.</p>
Request for lighting in the park to be solar powered with battery.	1	<p>Not currently being investigated for this site.</p> <p>The City's power is 100% renewable from wind and solar farms in regional NSW. This deal helps grow the renewable section in NSW and provide more jobs in the regional economy. For more information on our electricity deal, you can visit our website (https://news.cityofsydney.nsw.gov.au/articles/5-things-to-know-about-our-electricity-deal).</p> <p>Peace Park is a well shaded pocket park. The City recently removed a solar light in the park due to performance and failure over a period of time. Solar lights are high maintenance assets that require considerable solar access and an increased number of poles/lights in order to comply with safety and lighting level requirements. It is for these reasons that solar lights are not being considered as part of the park upgrade.</p>
Request for wind turbine with solar panels and battery to power park irrigation.	1	<p>Not currently being investigated for this site.</p> <p>Urban areas have poor wind resources and are extremely turbulent due to adjacent obstacles (such as trees and nearby buildings or structures) resulting in poor productivity and efficiency.</p> <p>The City's power is 100% renewable from wind and solar farms in regional NSW. This deal helps grow the renewable section in NSW and provide</p>

Engagement report

		<p>more jobs in the regional economy. For more information on our electricity deal, you can visit our website (https://news.cityofsydney.nsw.gov.au/articles/5-things-to-know-about-our-electricity-deal).</p>
Request for community composting facility.	1	<p>Not currently being investigated as part of park upgrade works.</p> <p>The City's Community Gardens Policy supports community composting in parks on a trial basis and where there is a group of local residents maintaining the compost system. The City has a rigorous system in place to ensure the success of community gardens and composting facilities.</p> <p>The City's Community Garden Guidelines and Community Composting Guidelines contain all the information required to establish, operate and manage a community garden. These documents are available for download on the City's website.</p>
Request for garden bed to be built on the south/western corner of the park, adjacent to the shared path.	text-align: center;">1	<p>This garden bed was previously proposed in the Broadway cycleway concept however was not built in order to increase pedestrian access of the shared path.</p> <p>As part of the detailed design phase we will review access and safety along the shared path for all users.</p>

Engagement activities

Overview of engagement undertaken in 2020

A Sydney Your Say webpage was created, along with an online survey. 969 letters were sent to residents in the area and key stakeholders were contacted.

A Zoom briefing was scheduled for 17 July and 9 residents attended.

A meeting onsite was scheduled for 29 October 2020 with four community members to discuss the revised design concept plan.

1. Sydney Your Say webpage

A Sydney Your Say webpage, <https://www.cityofsydney.nsw.gov.au/proposed-works-maintenance/improving-peace-park-chippendale> was created. The page included an electronic copy of the revised concept design, survey and other key information about the consultation.

A second page for the revised design was also created, <https://www.cityofsydney.nsw.gov.au/proposed-works-maintenance/revised-plans-improve-peace-park-chippendale>

2. Online feedback form via Survey Monkey

The community and stakeholders were able to give feedback using an online feedback form. A link to the feedback form was provided on the Sydney Your Say website.

3. Sydney Your Say e-News

The consultation was included in the Sydney Your Say July and November 2020 e-Newsletter (4,070 subscribers).

4. Consultation letter

A letter was posted to residents, inviting them to give feedback on the proposal. 969 letters were distributed for both consultations in July and November.

5. Notification email

An email was sent to key stakeholders, including the the Chippendale Residents Interest Groups, Sustainable Chippendale, Black Friars Childcare centre and SDN Children's Education and Car Centre, inviting them to give feedback on the proposal.

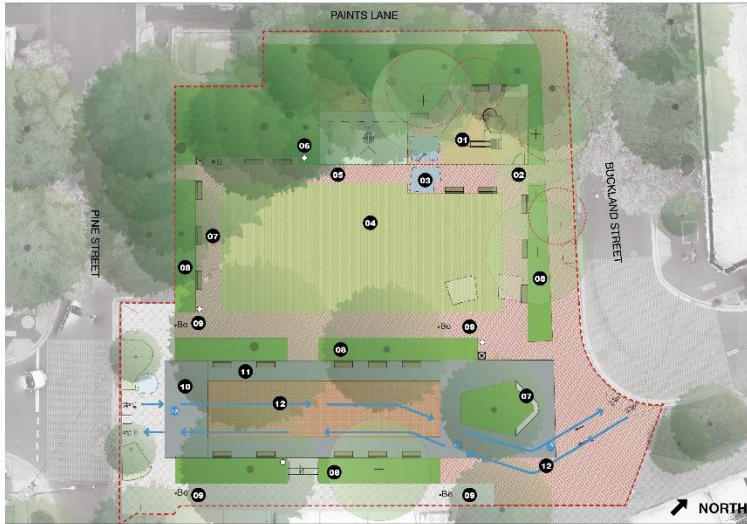
6. On site signage

Two notice boards were installed at Peace Park, inviting people to give feedback on the proposal.

Appendix

Appendix A: July/August 2020 concept design

Proposed works



- New paving
- New decomposed gravel
- Brick paving (new & existing)
- Retain existing paving
- New turf area (synthetic)
- New planting
- Retain existing planting
- New rubber softfall
- New mulch softfall
- New stairs
- New bench seats
- Bollards
- Bin
- Bubbler
- Reassigned shared path
- Birds of Peace & Industry mosaic
- Pine Street mosaic to be retained
- New playground fence
- New play structure with slide
- New basket swing
- New nature play elements
- Retain and protect existing trees
- New trees
- Existing trees to be removed and replaced

- 01** New fenced play area including play structure with play panels and a curly slide, a basket swing and nature play elements, suitable for children aged 1-10 years
- 02** New legible pedestrian entries
- 03** Investigate relocation of Birds of Peace & Industry mosaic
- 04** New central turf area (synthetic)
- 05** Improved circulation and access paths
- 06** Lighting upgrade as required
- 07** New and refurbished park seating in both sun and shade locations
- 08** Retain existing and provide new planting
- 09** Bollards to discourage cyclists accessing this area
- 10** New generous ramped entry into shared path
- 11** Upgraded plaza space with increased seating
- 12** New wide shared ramp through plaza to minimise pedestrian/cyclist conflict

Peace Park upgrade - community consultation plan CITY OF SYDNEY

Appendix B: 2020 concept design (revised)

Proposed works



- New permeable path
- Brick paving (new and existing)
- Retain existing paving
- New turf area (hybrid)
- New and retained planting
- New rubber softfall
- New mulch softfall
- New stairs
- Retained mosaics
- Bench seats
- Bin
- Bollards
- Bubbler
- New park fence
- New playground fence
- Outline of existing turf area
- New play structure with slide
- New swing set (x3 seats)
- Retain and protect existing trees

- 01** Permeable surface treatment to footpath
- 02** New legible and welcoming pedestrian entries
- 03** Improved circulation and access paths
- 04** New seating wall and potential location for future community artwork
- 05** New fenced play area including play structure with play panels and a curly slide, swing set with three seats and nature play elements, suitable for children aged 1-10 years
- 06** Retain existing and provide new planting
- 07** New water bubbler with dog bowl
- 08** Increased seating, both new and refurbished, in sun and shade locations
- 09** New central hybrid turf area (reinforced)
- 10** Lighting upgrade as required
- 11** Chicanes and bollards to discourage cyclists accessing this area
- 12** Retain Birds of Peace & Industry mosaic in existing location
- 13** New edible garden area
- 14** Retain area and improve with hybrid turf
- 15** Retain existing gravel seating area
- 16** Retain existing shared path in current location
- 17** Investigate raised threshold crossings

Peace Park upgrade - revised community consultation plan CITY OF SYDNEY

Appendix C: Sydney Your Say webpage

[Proposed works & maintenance](#)

Revised plans to improve Peace Park, Chippendale

The updated plan reflects what we heard from the community during the July–August 2020 consultation process.

↳ Related to [Park & playground works](#)

Chippendale

Under review

Contributions to this consultation are closed for evaluation and review. The project team will report back on key outcomes.

PUBLIC CONSULTATION PERIOD
27 November 2020 to 18 December 2020

What we're doing

We've updated the plan to reflect community feedback on the importance of retaining all the trees, the shared path alignment and the location of the Birds of Peace and Industry mosaics. We also propose hybrid (natural reinforced) turf located in the park's sunniest area.

The revised proposal for Peace Park includes:

- new fenced play area including play structure with a curly slide
- swing set and 3 seats (2 regular seats and 1 baby seat)
- informal nature play elements such as stepping stones and logs
- lawn planted with hybrid reinforced turf in the park's sunniest area
- more seating in sunny and shady areas and upgraded lighting as required
- new water bubbler and dog bowl
- better drainage to capture rainwater for use onsite.

As part of the works we'll provide locations for future community artwork opportunities to be investigated. We'll also investigate locations for compost bins and raised thresholds on Buckland Street and Pine Street.

All trees in the park will be retained and we'll add more plants.

Lucy Farley

DESIGN MANAGER

📞 [02 9265 9333](tel:0292659333)

✉ sydneyyoursay@cityofsydney...

COPY EMAIL ADDRESS

Speak up. Sign up.

Get our regular newsletter to have your say.

Subscribe ↗



Revised concept design ↕

PDF · 359.16 KB · Last updated 27 November 2020

Related projects

[Improving Peace Park, Chippendale.](#)



City of Sydney
Town Hall House
456 Kent Street
Sydney NSW 2000

+61 2 9265 9333
council@cityofsydney.nsw.gov.au
GPO Box 1591 Sydney NSW 2001
cityofsydney.nsw.gov.au

27 November 2020

Revised plans to improve Peace Park, Chippendale

We have updated our plans to upgrade the park and playground at Peace Park and invite your feedback on the revised design.

The updated plans reflect community feedback on the importance of retaining all the trees and supporting natural turf, the shared path alignment and the location of the birds of Peace & Industry mosaics. We have also updated the proposed playground elements.

The revised proposal for Peace Park includes:

- a new fenced play area including play structure with a curly slide
- a swing set and three seats (two regular seats and one baby seat)
- informal nature play elements such as stepping stones and logs
- lawn planted with hybrid reinforced turf and located in the park's sunniest area
- more seating in sunny and shady locations and upgraded lighting as required
- a new water bubbler and dog bowl
- better drainage to capture rainwater for use on site.

As part of the works, we will provide locations for future community artworks or mosaics and investigate raised thresholds on Buckland Street and Pine Street.

All trees in the park will be retained. We are putting in an extra planting area for a possible edible garden. A sketch showing the revised design is on the back of this page.

How to give feedback on the design

You can give view and give feedback on the proposal online at cityofsydney.nsw.gov.au/park-playground-upgrades. Feedback can be provided until **5pm on Friday 18 December 2020**.

Next steps

We will report all feedback and any resulting design changes to Council. If Council resolves to proceed with the upgrade, our staff will work on detailed designs and we will keep you updated on progress.

For more information about the project, please contact Lucy Farley, Design Manager on 02 9265 9333 or email sydneyyoursay@cityofsydney.nsw.gov.au

Yours sincerely,

A handwritten signature in black ink, appearing to read "Belinda", followed by a long, sweeping flourish.

Belinda Graham
Delivery Manager

CITY OF SYDNEY 

Have your say

Improving Peace Park

We plan to upgrade Peace Park and invite your feedback on the proposed design.

Over the next 10 years, we're upgrading more than 60 parks across the City of Sydney, from small pocket parks to larger local parks.

Public parkland is a high priority for our residents, workers and visitors. This network of park upgrades will create better quality open spaces for everyone to enjoy, help keep our city cooler, and support biodiversity in our local areas.

You can view the proposed design and give feedback at cityofsydney.nsw.gov.au/park-playground-upgrades

Consultation closes at **5pm on Tuesday 11 August 2020.**

We also invite you to a briefing on the proposed design with the project team via a Zoom video call on **Tuesday 4 August from 6.45pm to 7.15pm.** Register to join this meeting at cityofsydney.nsw.gov.au/park-playground-upgrades by **5pm on Sunday 2 August.** We will provide you with more information to set up the video call.

For more information about the project, please contact Lucy Farley, Design Manager on **02 9265 9333** or email sydneyyoursay@cityofsydney.nsw.gov.au

Document is Restricted